

vtech[®]

User's Manual

Pretend & Learn Doctor's Kit



© 2016 VTech
All rights reserved
Printed in China
91-003218-001 ^{UK}

VTech understands that a child's needs and abilities change as they grow and with that in mind we develop our toys to teach and entertain at just the right level...

vtech Baby

Toys that will stimulate their interest in different textures, sounds and colours

I am...

...responding to colours, sounds and textures

...understanding cause and effect

...learning to touch, reach, grasp, sit-up, crawl and toddle

Birth-36 months



Pre-School

Interactive toys to develop their imagination and encourage language development

I want...

...to get ready for school by starting to learn the alphabet and counting

...my learning to be as fun, easy and exciting as can be

...to show my creativity with drawing and music so my whole brain develops

3-6 years



Electronic Learning Computers

Cool, aspirational and inspiring computers for curriculum related learning

I need...

...challenging activities that can keep pace with my growing mind

...intelligent technology that adapts to my level of learning

...National Curriculum based content to support what I'm learning at school

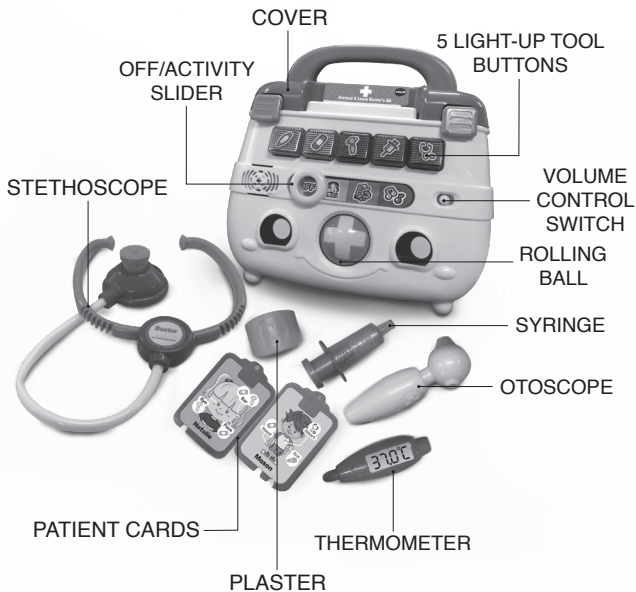
4-10 years



To learn more about this and other VTech® products, visit www.vtech.co.uk

INTRODUCTION

Thank you for purchasing the **VTech® Pretend & Learn Doctor's Kit**. This medical play set includes five medical tools, two patient cards and a storage case for fun on the go. Three activities introduce colours, body parts, fun medical facts and more!



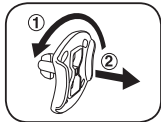
INCLUDED IN THIS PACKAGE

- One VTech® Pretend & Learn Doctor's Kit
- Tool accessories: plaster, otoscope, stethoscope, syringe and thermometer
- Two double-sided patient cards
- User's manual

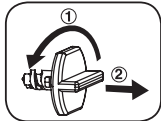
WARNING: All packing materials, such as tape, plastic sheets, packaging locks and tags are not part of this toy, and should be discarded for your child's safety.

NOTE: Please keep the user's manual as it contains important information.

Unlock the packaging locks:



1. Turn the packaging lock anti-clockwise several times.
2. Pull out and discard the packaging lock.

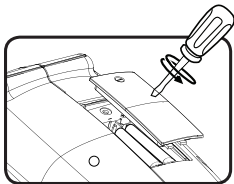


1. Rotate the packaging lock 90 degrees anti-clockwise.
2. Pull out the packaging lock and discard.

GETTING STARTED

BATTERY INSTALLATION

1. Make sure the unit is turned **OFF**.
2. Locate the battery cover on the bottom of the unit.
3. Use a screwdriver to loosen the screw and open the battery cover.
4. Install 2 new AA (LR6/AM-3) batteries into the battery box as illustrated. (The use of new, alkaline batteries is recommended for maximum performance.)
5. Replace the battery cover and tighten the screw to secure.



BATTERY NOTICE

- Use new alkaline batteries or fully charged NI-MH (Nickel Metal-hydride) rechargeable batteries for best performance.
- Use only batteries of the same or equivalent type as recommended.
- Do not mix different types of batteries: alkaline, standard (carbon-zinc) or rechargeable (Ni-Cd, Ni-MH), or new and used batteries.
- Do not use damaged batteries.
- Insert batteries with the correct polarity.
- Do not short-circuit the battery terminals.
- Remove exhausted batteries from the toy.
- Remove batteries during long periods of non-use.
- Do not dispose of batteries in fire.
- Do not charge non-rechargeable batteries.
- Remove rechargeable batteries from the toy before charging (if removable).
- Rechargeable batteries are only to be charged under adult supervision.

Disposal of batteries and product



The crossed-out wheellie bin symbols on products and batteries, or on their respective packaging, indicates they must not be disposed of in domestic waste as they contain substances that can be damaging to the environment and human health.



The chemical symbols Hg, Cd or Pb, where marked, indicate that the battery contains more than the specified value of mercury (Hg), cadmium (Cd) or lead (Pb) set out in Battery Directive (2006/66/EC).

The solid bar indicates that the product was placed on the market after 13th August, 2005.

Help protect the environment by disposing of your product or batteries responsibly.

For more information, please visit:

www.recycle-more.co.uk

www.recyclenow.com

PRODUCT FEATURES

1. OFF/ACTIVITY SLIDER

Move the **OFF/ACTIVITY SLIDER** to select an activity to play. To turn the unit **OFF** move the slider to **OFF**.



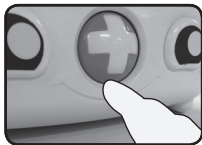
2. LIGHT-UP TOOL BUTTONS

Press the **LIGHT-UP TOOL BUTTONS** to learn medical tool names, colours, fun facts or answer the questions in related activities.



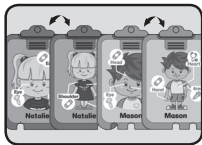
3. ROLLING BALL

Spin the **ROLLING BALL** to hear melodies and sing-along songs, learn fun medical facts or get helpful hints in related activities. The eyes will also move when rolling the ball.



4. DOUBLE-SIDED PATIENT CARDS

Insert either card into the slot to perform guided examinations. The doctor's kit will ask you to find and use the medical tools to treat patients in addition to introducing body parts and playing songs.



5. COVER

Open or close the **COVER** to hear fun responses.



6. VOLUME CONTROL SWITCH

Slide the **VOLUME CONTROL SWITCH** to the right for high volume or slide to the left for low volume.



7. ACCESSORIES

Use the **PLASTER**, **OTOSCOPE**, **STETHOSCOPE**, **SYRINGE** and **THERMOMETER** for role-play fun.




8. AUTOMATIC SHUT-OFF


To preserve battery life, the **VTech® Pretend & Learn Doctor's Kit** will automatically power down after several minutes without input. The unit can be turned on again by sliding the **OFF/ACTIVITY SLIDER** to any of the 3 modes.

ACTIVITIES


Activity 1: Learning Mode

Move the **ACTIVITY SLIDER** to the second position  to enter this mode. Press any **TOOL BUTTON** to learn the tool's name, facts and colours. Spin the **ROLLING BALL** to learn fun medical facts. Insert a **PATIENT CARD** to perform an examination and treat the patient.

Activity 2: Quiz Mode

Move the **ACTIVITY SLIDER** to the third position  to enter this mode. The doctor's kit will ask a series of questions about tools, facts or colours. When a **PATIENT CARD** is inserted, it will ask questions about the patient. Press the **TOOL BUTTONS** to answer.

Activity 3: Music Fun

Move the **ACTIVITY SLIDER** to the fourth position  to enter this mode. Spin the **ROLLING BALL** to hear fun medical songs or melodies. Press any of the **TOOL BUTTONS** to add silly sounds into the songs, and watch the lights flash with the music!

SING-ALONG SONG LIST

SONG 1

Going to the doctor is no big deal
Doctors and nurses want to help you heal
Be sure to tell them how you feel
So you can stay healthy happily

SONG 2

Head, shoulders, knees and toes, knees and toes
Head, shoulders, knees and toes, knees and toes
And eyes and ears and mouth and nose
Head, shoulders, knees and toes, knees and toes

SONG 3

I'm just what the doctor ordered, I'm a medical kit!
House calls and helping people make me smile
So does playing with you for awhile

SONG 4

Doctors need tools to do their job
An otoscope to see in your mouth, say "ahhhh"
A stethoscope to hear your heart beat
Doctors' tools can be really great

CARE & MAINTENANCE

1. Keep the unit clean by wiping it with a slightly damp cloth.
2. Keep the unit out of direct sunlight and heat source.
3. Remove the batteries when the unit is not in use for an extended period of time.
4. Do not drop the unit on hard surfaces and do not expose the unit to moisture or water.

TROUBLESHOOTING

If for some reason the program/activity stops working or malfunctions, please follow these steps:

1. Please turn the unit **OFF**.
2. Interrupt the power supply by removing the batteries.
3. Let the unit stand for a few minutes, then replace the batteries.
4. Turn the unit **ON**. The unit should now be ready to play again.
5. If the product still does not work, replace with a new set of batteries.

If the problem persists, please call our Consumer Services Department on 01235 546810 (from UK) or +44 1235 546810 (outside UK) and a service representative will be happy to help you.

IMPORTANT NOTE:

Creating and developing **VTech®** products is accompanied by a responsibility that we take very seriously. We make every effort to ensure the accuracy of the information which forms the value of our products. However, errors sometimes can occur. It is important for you to know that we stand behind our products and encourage you to call our Consumer Services Department on 01235 546810 (from UK) or +44 1235 546810 (outside UK) with any problems and/or suggestions that you might have. A service representative will be happy to help you.





PRODUCT REGISTRATION

Visit www.vtech.co.uk/clubvtech/login
to register your VTech product

By joining the VTech Club you can also enter competitions, find out about news and events, seek expert advice for parents and let your kids play fun learning games and activities.



PRODUCT WARRANTY

Thank you for choosing this quality product from VTech. We hope it will bring many hours of entertainment, imaginative play and learning.

1. The product detailed above is covered by a one year warranty from the date of purchase, against any defects in materials or workmanship.
2. The product may be returned to the place of purchase. Alternatively the product can be returned to VTech Electronics Europe plc (see address below), with proof of purchase, without proof of purchase no replacement will be provided.
3. VTech Electronics Europe plc will examine the product and if it is found to be defective due to faulty materials or workmanship, will replace the product at their discretion.
4. If the product covered by this warranty is damaged due to misuse, modification or unauthorised repair, or because of faulty batteries, battery discharge or incorrect electrical connections, then this warranty becomes void.
5. This warranty is personal to the original purchaser and is not transferable.
6. Breakages to the LCD screen are not covered by the warranty.
7. Returns to VTech Electronics Europe plc should include a cheque or postal order for £1.50 towards the cost of return postage and packaging.
8. Products returned to VTech Electronics Europe plc, should be addressed as follows and packed carefully to avoid damage in transit (Please do not include batteries or adaptor). Please include details of the fault together with your name and address.
9. To keep an online record of your warranty, please register your product online at www.vtech.co.uk/warranty

Vtech Electronics EU PLC, c/o XPO Logistics, Warehouse 350, Cat & Fiddle Lane, West Hallam, DE7 6HE

THIS WARRANTY IS OFFERED AS AN EXTRA BENEFIT AND DOES NOT AFFECT CONSUMERS' STATUTORY RIGHTS.

This warranty is valid for the UK and Eire only. For products purchased outside the UK and Eire, please contact your local distributor or place of purchase.